

Join us for a Spring Potluck and Slide Show

The Yolano Group Sierra Club invites you to a potluck and two exciting slide presentations featuring our local natural heritage. We hope you will join us for a fun evening of great food, entertainment, and fellowship.

The event will take place on **Monday, March 24 from 6:30 to 9 in the Blanchard Room of the Davis Branch of the Yolo County Library, 315 Fourteenth Street in Davis.** The event begins with the potluck at 6:30 followed by the presentations at approximately 7:15.

Bob Schneider, co-conservation chair of the local Sierra Club and president of Tuleyome, a nonprofit that advocates for and protects the Cache Creek and Putah Creek regions, will give a short slide presentation to discuss what a *Blue Ridge Berryessa Natural Conservation Area* would mean for the 800,000 acres of public and private lands proposed for inclusion. According to Schneider, the new designation will “protect biological diversity; help to ensure a sustainable working landscape; provide new opportunities for recreation consistent with those goals; attract increased funding for conservation and stewardship; and support the local economies of the adjacent communities”. The lands proposed for the National Conservation Area are listed as one of the world's 25 biodiversity “hotspots” and consist of thousands of acres of pristine landscape rugged canyons, open space, agricultural land and habitat for multiple species, including deer, black bear, mountain lions, and the occasional tule elk.

In the second presentation, Steve Evans, local author and conservationist, will discuss his new book “*Top Trails Sacramento: Exploring the Valley, Foothills, and Mountains in the Sacramento Region*”, taking us over some of the most scenic hiking trails in the Sacramento area. The new book features 43 hikes totaling more than 235 miles of trails. The slide presentation will feature 15 of the most scenic trails covered in the book. The hikes range from one to ten miles in length, from easy to difficult, and from near sea level to 9,000 feet in elevation. Many of the trails are accessible year round and rich in natural and cultural history. Steve has been hiking and backpacking Northern California trails for more than 30 years and spent three years hiking trails in the Sacramento Region to produce the area's first comprehensive trail guide. Books will be available for purchase at the event.

Please bring your favorite dish to share and, to help us save the planet and cut down on waste, please bring your own plates, cups and utensils. The Yolano Group will provide beverages. **For more information, contact Pam at 530-756-6856 or pnieberg@dcn.davis.ca.us**



Mariposa lily

Yolano Group Election Results

Thanks to all of you who took the time to vote for Management Committee members in our recent election. Please welcome back Carolyn Hinshaw and Pam Nieberg, and give a big welcome to new Management Committee members, Alan Pryor and Rodney Robinson. Continuing members are Stacie Frerichs, Bob Schneider, and Marc Vayssières. All are pleased to have the opportunity to work for the club and for all of you for the next two years.

The Management Committee meets on the second Thursday of each month. You are invited to attend our meetings. Meeting locations are announced in the Davis Enterprise, or you can call or email Pam at 530-756-6856 or pnieberg@dcn.davis.ca.us and ask to be put on the contact list.

All the work done by the Yolano Group is volunteer effort. We can always use your help wherever you feel you can fit in. To volunteer, contact Pam at the above phone or email.

Thank you for your support.

In this issue:

- ◆ Elections Results
- ◆ Spring Potluck and Slide Show
- ◆ Old Sugar Mill Project
- ◆ Conservation Musings
- ◆ Successful Fundraising
- ◆ Outings
- ◆ Visit us at the Whole Earth
- ◆ Members Potluck

Call Pam to help staffing our booth at the Whole Earth Festival

Successful Fundraising

Once again, our annual sale of Sierra Club calendars, Season's Greeting cards and puppets turned out to be a very worthwhile and profitable effort. We raised over \$2,300 which will be carefully spent in our work to meet the needs of environmental causes in Yolo County as well as nearby counties.

A deeply felt thank you goes out to our many supporters and to our dedicated volunteers who help at our Farmers Market table on chilly Saturday mornings.

The success of our sales depends on these volunteers since the vast majority of calendars and cards are sold at the Davis Saturday market.

The preservation of the environment is, of course, in everyone's interest and the need of the Sierra Club and other environmental organizations for public support is greater than ever.

Visit us at the Whole Earth Festival

The Yolano Group will have a table at the Festival from Friday afternoon, May 9th through Sunday, May 11. We will have information and petitions on various environmental issues, including global warming and climate change and how we can work as communities to reduce our carbon footprints; our future in the face of declining traditional energy resources; and issues related to preservation of ag land and open space and future growth in our region.

We will be sharing a booth with Tuleyome, a group dedicated to the protection of the Putah Creek and Cache Creek bio-regions. They will have information on the creation of a Blue Ridge Berryessa National Conservation Area on 800,000 acres of public and private lands in the Blue Ridge/Berryessa region and things you can do to help.

Please be sure to visit our table while enjoying the Festival.

Volunteers to help us staff the booth, please contact Pam Nieberg at 530-756-6856 or pnieberg@dcn.davis.ca.us

Old Sugar Mill Proposal is back!

Last January, the Delta Protection Commission (DPC) blocked what would have been the first urban development in the primary zone of the delta since the Delta Protection Act (DPA) was passed in 1992. The project had been approved by the Yolo County Board of Supervisors, despite concerns regarding inadequate levees and flooding issues. After hours of testimony, the DPC concluded that the Old Sugar Mill Project violated parts of the Delta Protection Act and Delta Management Plan. This marked the first test of the DPA, a 15 year old law designed to protect about 500,000 acres of delta open space and agricultural land from urban development.

The Old Sugar Mill developer has recently come back to the County with a redesigned project with fewer houses (122), but otherwise, very minor changes from the original proposal. On January 24 of this year, the Yolo County Planning Commission heard the revised project and voted to approve the project 6-0, despite the fact that Environmental documents state that the project could expose people and structures to significant risk of loss, injury or death due to potential levee failure. Clarksburg residents have also recently been advised that they no longer have 100-year flood protection. The developer's plan to get the houses out of the flood plain is to build them up 12 feet. This, however, would put the existing residents, homes and businesses in even greater danger of flooding if a levee breaks.



Concerned Citizens of Clarksburg and environmentalists want this plan stopped for good and plan to fight it. Permitting this project would be a violation of the Delta protection act which prohibits

urban development in the primary zone of the delta, but it would also set a precedent for further urbanization in the primary zone of the delta. "If urbanization is permitted here, it will be irreversible and self-accelerating", states Peggy Bohl, a concerned Clarksburg resident.



The delta is a fragile and important ecosystem; it contains some of the state's best farmland; it is the source of drinking water for more than 20 million California residents. Urbanization in the primary zone of the delta, in addition to all the other assaults on this fragile environment, could push it over the edge, resulting in collapse of the entire delta ecosystem.

TAKE ACTION!

This revised proposal is tentatively scheduled to go the Board of Supervisors in February and to the Delta Protection Commission in March, 2008. The times and dates have not yet been determined. Please contact the Board of Supervisors and the DPC and urge them to deny this project.

Board of Supervisors:

- ✍ Chair, Duane Chamberlain, 530-666-8627, duane.chamberlain@yolocounty.org
- ✍ Mariko Yamada, 530-666-8623, mariko.yamada@yolocounty.org
- ✍ Helen Thomson, 530-757-5557, helen.thomson@yolocounty.org
- ✍ Matt Rexroad, 530-666-8621, matt@rexroad.com
- ✍ Mike McGowan, 916-375-6441, mike.mcgowan@yolocounty.org

Or you can mail comments to the supervisors at: 625 Court Street, Room 204, Woodland, CA 95695.

Contact the Delta Protection Commission by writing to: Arnie Simonsen, chair, 14219 River Road,

Walnut Grove, CA 95690.

For more information, contact Peggy Bohl at 916-744-1555 or bohl@frontiernet.net.

Conservation Musings

On January 19, I drove to Lower Lake for a presentation on the *Blue Ridge Berryessa National Conservation Area* proposal. The event was organized by Victoria Brandon of the Lake Group of the Redwood Chapter of the Sierra Club. Apparently, it was branding time and on the Knoxville Road above Lake Berryessa we were delayed by a cattle drive. It was a very real reminder that much of the Blue Ridge Berryessa region is a *working landscape* made up of private lands.

One of the goals of the *National Conservation Area (NCA)* designation is to make sure that working landscapes endure into the future.

Farms and ranches benefit from the landscape, but they also play a critical role in sustaining it. Rural land-uses are a bulwark against residential and commercial development. They provide the economic means for private landowners to remain on the land in a manner that relies upon rather than destroys the natural environment.

The alternative is clear. When working farms and ranches are replaced by subdivisions and ranchettes, the landscape becomes fragmented, which destroys the habitats that support the plants and animals native to the region.

A relatively new organization, the *California Rangeland Conservation Coalition (CRCC)*, recognizes that there is a rela-

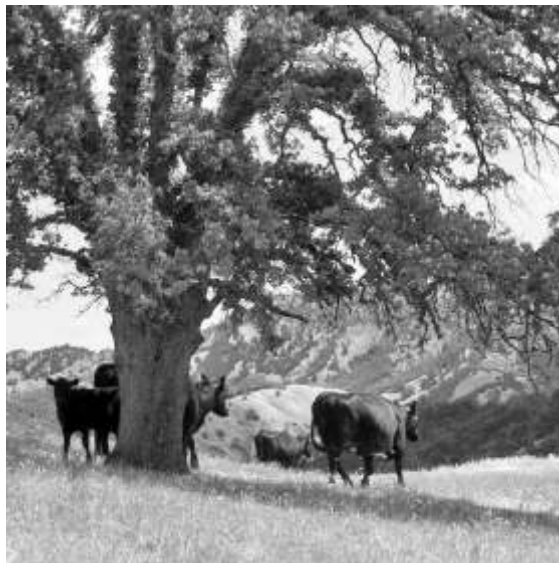
tionship between private lands in the working landscape and the conservation of important habitats around the Central Valley. It came out of discussions between the California Cattleman's (and Cattlewoman's) Association and the Defenders of Wildlife. This Coalition is using a science-based approach to prioritize important habitat areas, including portions of the Blue Ridge, Capay Hills and Cortina Ridge. CRCC members are also fighting to get the conservation dollars necessary to protect these important private lands with conservation easements, enhance land stewardship practices, and streamline their implementation.

Other groups, such as the Farm Water Alliance (FWA), stand in stark contrast out of the main stream of the modern ranching community. They oppose conservation easements and efforts to protect these lands in perpetuity. They even oppose the NCA proposal on our public lands.

We are talking with the FWA. I believe that all the parties involved do want to see a sustainable working landscape into the future. But, there is still a very large divide between our beliefs and approach and theirs. The Rangeland Coalition shows that on some issues common ground can be found.

Over the next several months we will continue making presentation on the NCA proposal to interested stakeholder groups, service clubs and decision makers. Please let us know if you would like a presentation for a group or business with which you work.

Email *Bob Schneider* at verve2006@comcast.net or call 530-304-6215.



Sierra Club Outings

Led by local leaders

Saturday, March 29

Day Hike, 2A

Coyote Peak Trail, Bothe-Napa State Park

Ferns, redwoods, oak forests, views of upper Napa Valley and poison oak on this moderate 6.3 mile hike with 950 feet elevation gain. Stream crossings, some steep, rocky parts. Wear sturdy boots and long slacks. Bring lunch, water, snacks, \$6.00 for car entrance to park (\$5.00 seniors) and post hike snack/dessert in St. Helena. NOTE: This is an all-day outing; hikers must be in good physical condition. Rain cancels. For meeting place and time in Davis, contact leaders, Lin and Peter Lindert after March 25 at 530.758.6418 or llindert@sbcglobal.net.

Saturday, April 12

Day Hike, 2B

Samuel P. Taylor State Park

Hike a 7 mile loop with 1,300 feet elevation gain on Bill's Trail in Samuel P. Taylor State Park. Fern canyons and views of Tomales Bay. Caution: poison oak. Wear long pants and hiking boots, bring lots of water, rain and wind protection, lunch and a snack. Special note: hikers must be in good hiking condition. No facilities on trail. There is a

\$6.00 parking fee per car at the state park kiosk (\$5.00 seniors). Optional dinner in Inverness afterwards. Rain cancels. For meeting place and time in Davis, contact leaders, Lin and Peter Lindert after March 25 at 530.758.6418 or llindert@sbcglobal.net.

Thursday, April 17

Hike, 1A

Historic Stroll & Lunch, Woodland, CA

Take a walk through late 19th century historic Woodland. View houses and buildings in the National Historic Register. Enjoy lunch in a restaurant, and then tour the Southern Pacific Railroad Depot which is being restored. Limited to 15. Leaders: Estelle Miller, Lin Lindert and Sue Barnette. Costumes optional! Rain cancels. For reservations and information about meeting places, contact Lin Lindert after March 30th: 530.758.6418 or llindert@sbcglobal.net.

Other Outings

The Yolano Group is part of the Mother Lode Chapter. To find out about other Sierra Club outings, find them listed at: www.motherlode.sierraclub.org/ and click on "outings". There are outings for people of all ages and at all levels, including hiking, backpacking, kayaking, paddle trips, etc.

Our friends at Yolo Hiker have a hike schedule at: <http://yolohiker.org/>

Yolano Group management committee

- ⚙ Pam Nieberg, co-chair; pnieberg@dcn.davis.ca.us; 530-756-6856
- ⚙ Stacie Hartung-Frerichs, co-chair; raftingcrafter@yahoo.com
- ⚙ Carolyn Hinshaw, Conservation co-chair; aaagh@comcast.net; 530-757-2830
- ⚙ Bob Schneider, Conservation co-chair; verve@dcn.davis.ca.us; 530-758-4315
- ⚙ Alan Pryor, ozone21@att.net
- ⚙ Rodney Robinson, rodney@yolo.com
- ⚙ Marc Vayssières; marcvc@dcn.davis.ca.us

The Management Committee meets on the second Thursday of each month. The public is invited to the meetings. Watch for announcements in the Enterprise for location or you can call Pam at 530-756-6856 for information or to get on our email list.

- ⚙ Treasurer: Marc Vayssières
- ⚙ Secretary: Pam Nieberg
- ⚙ Newsletter editor and webmaster: Marc Vayssières
- ⚙ Flame Distribution and membership: Ida Bryan

<http://motherlode.sierraclub.org/Yolano/>

Sierra Club Member Potluck

"Get to know your local Sierra Club members and meet your neighbors"

Date: Saturday April 5th **Time:** 6:30pm-9pm

Place: 2222 Muir Woods Pl. (Muir Commons Common House)

Hosts: Dina St. Clair & Clark Dodsworth, phone 758-7819

We provide: a large dining room, living room, and fully equipped kitchen, place settings (dishware, glassware, silverware, napkins, and serving utensils), non-alcoholic beverages, dessert, name tags.

You bring: a main dish or side dish or appetizer, your energy and conversation.

Directions: Take Covell west past 113 to Denali Dr. Take Denali south 5 blocks to Muir Woods Pl. Turn left (east) and park on Muir Woods Place. Or go one more block south to Shasta Dr., turn left and park on Shasta or in the Patwin Elementary School lot.

Or take Russell west past 113; it curves north, becoming Arlington. At the stoplight at Shasta, turn right onto Shasta; go one block, just past Denali. Park there on Shasta or turn right, into Patwin School lot.

Parking: on Muir Woods Place, Shasta Drive, or in the Patwin Elementary parking lot south of Muir Commons. Please do not park in either of the two Muir Commons parking lots; they are used by the residents.



Non-Profit Organization
U.S. Postage Paid
Permit No. 607
Sacramento, CA

Mother Lode Chapter, Sierra Club
Yolano Group
1116 Ninth St.
Sacramento, CA 95814