

## Paradise Lake

Start 7200 ft, end 7800 ft (1600 ft total up, 1000 ft down) going in.  
6-7 miles (3-4 hrs) each way on good trail.

The first 2 miles is on a dirt road, the next 4 miles is on the PCT, and the final mile is a jeep road. The destination is a classic Sierra Lake sculpted out of granite.

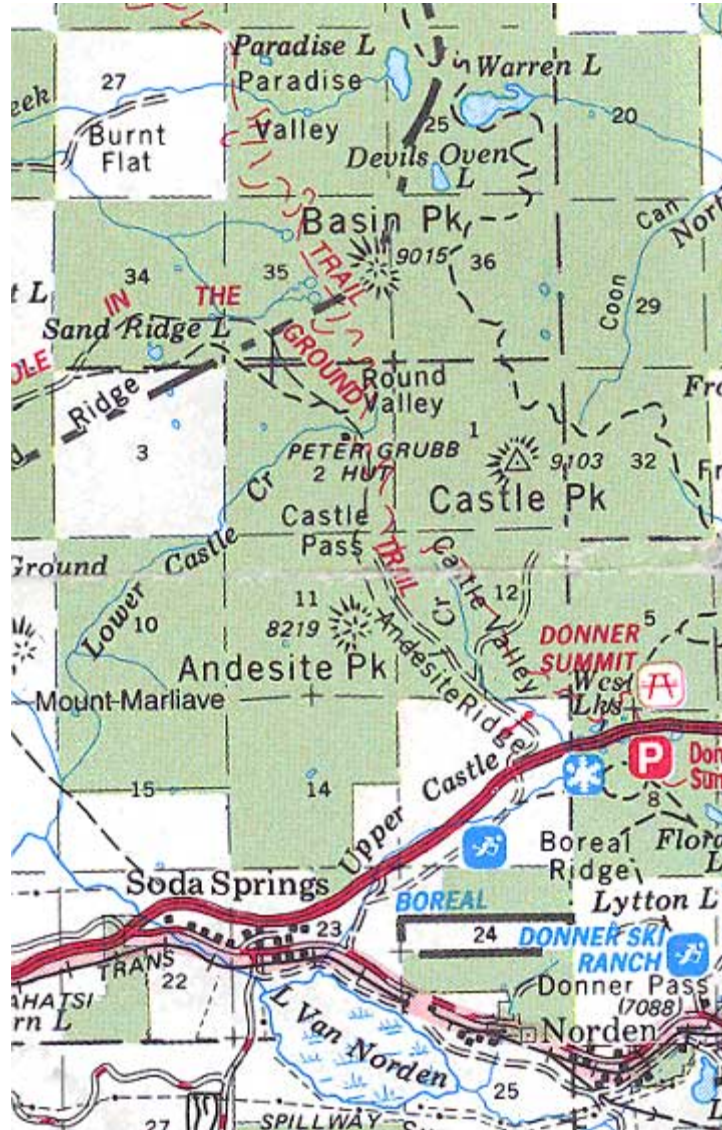
Take the Boreal/Castle Peak exit from I-80 at Donner Summit. Go east along the frontage road on the north side of the freeway. Park where the pavement ends. Vehicles with good clearance can cover the two miles of dirt road, shortening the hike.

From the pavement end, follow the dirt road about ¼ mile to the south end of Castle Valley. Bear left and up, keeping Castle Valley on your right. At about a mile from the end of pavement the road forks; take the left, upward branch. About ½ mile farther, you will see signs for the Hole-in-the-Ground (mountain biking) Trail on the left; there is parking here. The road gets worse, first with potholes at a spring, then in several sections where there are huge ruts and protruding rocks. The road ends at the base of Castle Pass.



*Peter Grubb Hut provides winter shelter to backcountry skiers and snowshoers*

Climb 200 vertical feet to the pass; the PCT comes in from the right about two-thirds of the way up. A spur from the Pass heads east to the summit of Castle Peak. Instead continue north maintaining elevation (about 8000 ft) for about ½ mile, then dropping into Round Valley where you can visit historic Peter Grubb Hut.



*Map showing route from I-80 to Paradise Valley. The jeep road in Section 27 extends along the north side of Paradise Valley almost to Paradise Lake.*

Just north of Peter Grubb Hut and Lower Castle Creek, you can take the Sand Ridge Lake Trail west; this would be a pleasant and shorter alternative to Paradise Lake. You could return on the Hole-in-the-Ground Trail.

The PCT continues north, climbing over the west shoulder of Basin Peak and dropping through a deep forest of old trees into Paradise Valley at about 6 miles from I-80. The PCT

continues north across a bridge over North Creek. Pick up a jeep road/trail about ¼ mile beyond the bridge. Follow it eastward around the north side of Paradise Valley, eventually reaching Paradise Lake.

Although most of Donner Summit is covered with old lava flows, the lava has been eroded from Paradise Valley. Both the valley and the lake are framed beautifully by the white granite.



*Granite boulders and small pond in Paradise Valley  
Paradise Lake is in the saddle, center horizon.*



*Paradise Lake*

<b>GPS Readings</b>				
<b>Location</b>	<b>Time (UTC)</b>	<b>Elevation</b>	<b>Latitude (N)</b>	<b>Longitude (W)</b>
Parking, Castle Pass	17:00	7875'	39° 21.446'	120° 21.859'
Castle Pass		7936'	39° 21.523'	120° 21.897'
Peter Grubb Hut	17:32	7848'	39° 22.078'	120° 22.052'
PCT, Basin Peak	18:13	8401' (max)	39° 23.061'	120° 22.404'
Bridge	19:07	7592' (min)	39° 23.836'	120° 22.600'
Jeep Trail		7675'	39° 24.027'	120° 22.648'
Paradise Lake	19:46	7761'	39° 23.880'	120° 21.718'